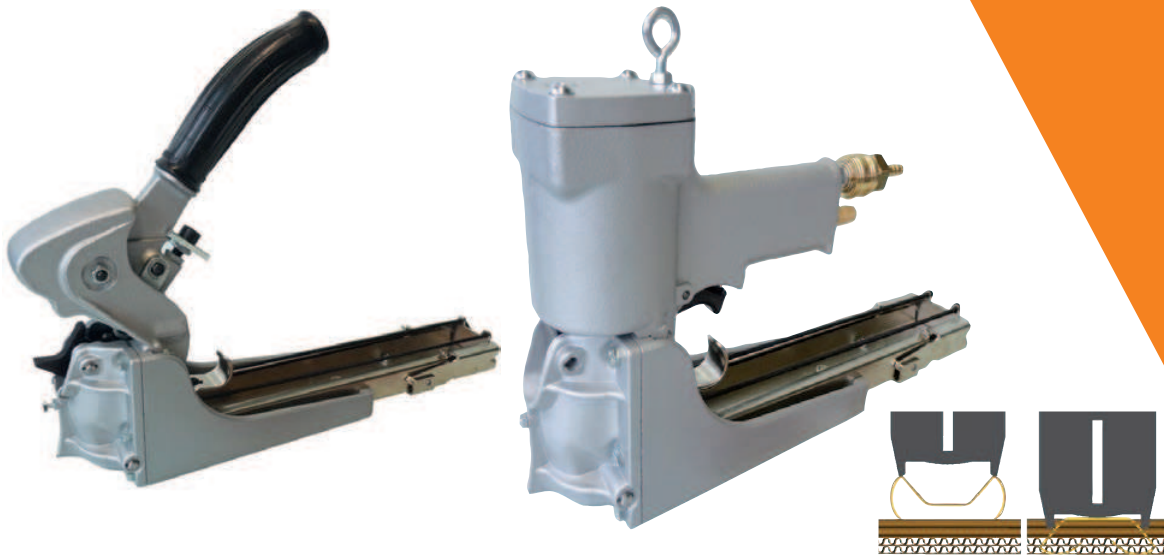


# TOP SP EH + TOP SP P

# BLIND STAPLERS TOP



**WEIGHT**  
2.4 kg / 2.9 kg



**MECHANICAL & PNEUMATIC**



**STAPLE SIZE**

Crown 35 mm  
Legs 18 mm  
Wire diameter 1.0 x 2.0 mm



**CAPACITY**

120 staples



## APPLICATION RANGE

Blind stapling of cartons made of corrugated cardboard with joining and overlapping flaps. No damaging of the material to be stapled is possible. Suitable for single and double-corrugated cardboard. With **MEZGER** Blind Staplers there are no additional stitching holes next to the staples.

## TECHNICAL DATA

Mechanical or pneumatic staplers for the TOP Staple, leg length 18 mm.

TYPE	TOP SP EH	TOP SP P
Version	mechanical	pneumatic
Device dimensions (length x width x height)	360 x 84 x 275 mm	345 x 85 x 215 mm
Weight	2.4 kg	2.9 kg
Leg length of the staples	18 mm	18 mm
Load capacity: (Number of staples)	120	120
Air pressure	–	4 – 6 bar
Air consumption per stapling process at 6 bar	–	1.3 NL

